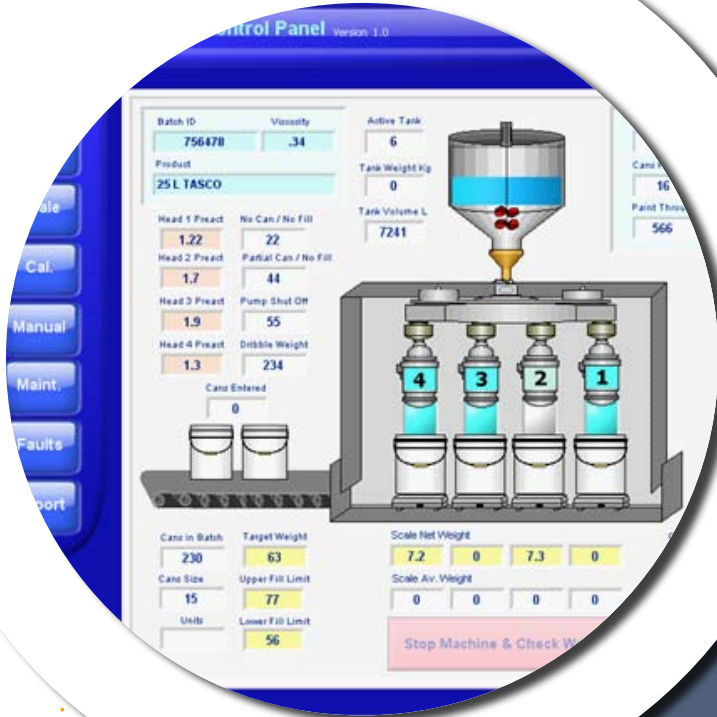


SCADA System

helps to fill the world with colour

test & measurement
custom electronics
engineering software
data management



defence & aerospace

consumer goods

environment

mining

ICT

energy

agriculture

biotechnology

transport & automotive

Challenge

PPG is a global company that manufactures and supplies industrial coatings and household paints. CPE Systems was approached to design and implement a solution that would allow PPG to improve the efficiency of their filling lines through better data and event tracking.

Firstly, the proposed solution had to operate within the existing manufacturing environment which included a suite of PLCs which were used to control the paint dispensing process. Although reliable, these units were unable to store or collate enough information to detect production inefficiencies.

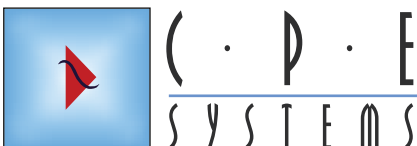
Secondly, the system required a real-time, user friendly HMI that could provide operators with instant feedback about the accuracy of the filling lines during production. This information would then allow the process to be fine tuned 'on the fly' to increase production yields.

Solution

In order to develop the ideal solution, CPE engineers liaised extensively with production managers and operators to best understand the existing production methods and capabilities. As a result, CPE was able to:

- Improve the usability and readability of the operator interface using LabVIEW from National Instruments
- Develop and install a secure on-line database that worked seamlessly with LabVIEW, to store critical test data in a safe and secure location
- Increase visibility and access to the production process by PPG management. Specified personnel now have the capacity to remotely view the operator interface in the production facility via a simple web browser. This allows managers to detect problems and view production yields in real time.

For more CPE user solutions, visit our website.



www.cpesys.com.au